

Saying



to Workplace Surveillance :

Lessons from the Cybersecurity and Privacy Institute

Lisa Oakley , xenia dragon, † Eysa Lee

> Hi folks,
 >
 > Please see the important message below. As members of the Cybersecurity and Privacy Institute, I'm aware that many of you likely have concerns about these devices. Feel free to send any feedback to me and Jan so we can gather and respond accordingly.
 >

> In order to develop best practices for assigning desks and seating within ISEC, the Office of the Provost will be conducting a study aimed at quantifying the usage of currently assigned seating in the write-up areas outside of the labs and the computational research desks. The results will be used to develop best practices for assigning desks and seating within ISEC (and EXP in due course).
 >
 > The selected solution to conduct this project is a Spaceti occupancy monitoring system which will be installed under currently assigned desks within ISEC to identify and document desk occupancy and usage. This is a passive infrared sensor that detects if the workstation/desk is occupied or unoccupied. The monitoring system will aggregate data by subzones to generate when a desk is occupied or not. The goal of this project is to inform decisions around current and future interdisciplinary research space design to ensure access to more research opportunities for the community.

An open letter by the students and faculty in the ISEC building at Northeastern University

Dear Provost Madigan and Senior Vice Provost Luzzi,

On Sept. 16, all faculty and Ph.D. students who work in ISEC were informed that a "study" would soon be conducted using a desk monitoring system to "develop best practices for assigning desks and seating". We, the undersigned faculty and students, wish to convey our extreme disappointment at both the study itself and the manner in which it was decided upon. We request that the study be paused, and be replaced with a process whereby the subjects of the study understand its goals and have input on how it will be conducted.

Below are some of our chief concerns:

- Resident in ISEC is the Cybersecurity and Privacy Institute, one of the world's leading groups studying privacy and tracking, with a particular focus on IoT devices. To deploy an under-desk tracking system to the very researchers who regularly expose the perils of these technologies is, at best, an extremely poor look for a university that routinely touts these researchers' accomplishments. At worst, it raises retention concerns and is a serious reputational issue for Northeastern.
- Faculty and students were not involved or even consulted as this project was considered. In particular, no opportunity was provided for the subjects of this study to understand its goals, provide input, or identify potential less-privacy-invasive alternatives. As this study involves human subjects, consent should have been obtained.

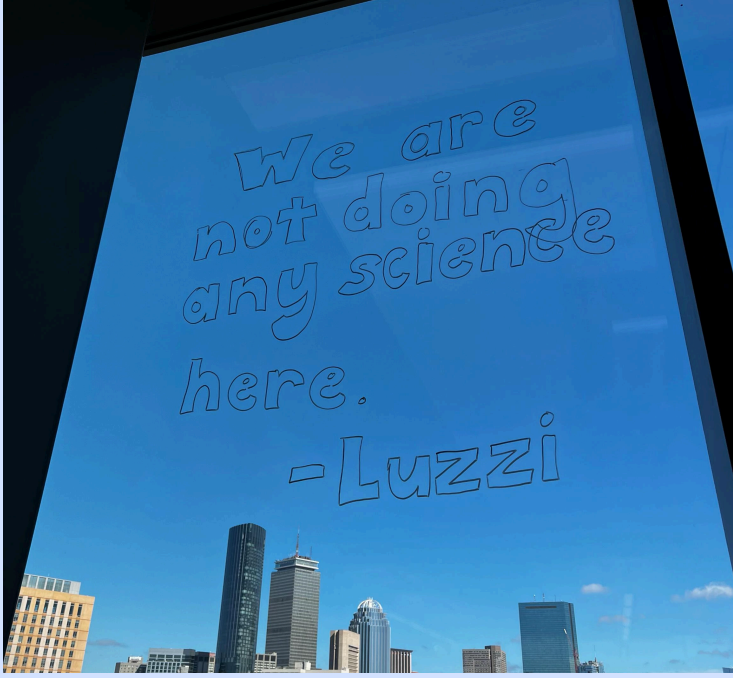
Luzzi explains what IRB does. Says "calling this something about monitoring people is wrong. This is desk occupancy"

Student: who are we monitoring if not people

Luzzi: any heat source

Student: what other heat source would it be

Luzzi: could be a service animal or something but I guess yeah its a human. We don't know if it is a person who normally uses that desk or someone else. No individual data goes back to the



I'm writing to follow up on Thursday's email from Senior Vice Provost David Luzzi. I want to make it clear that all of the desk sensors installed in ISEC have been removed and will not be reinstalled.

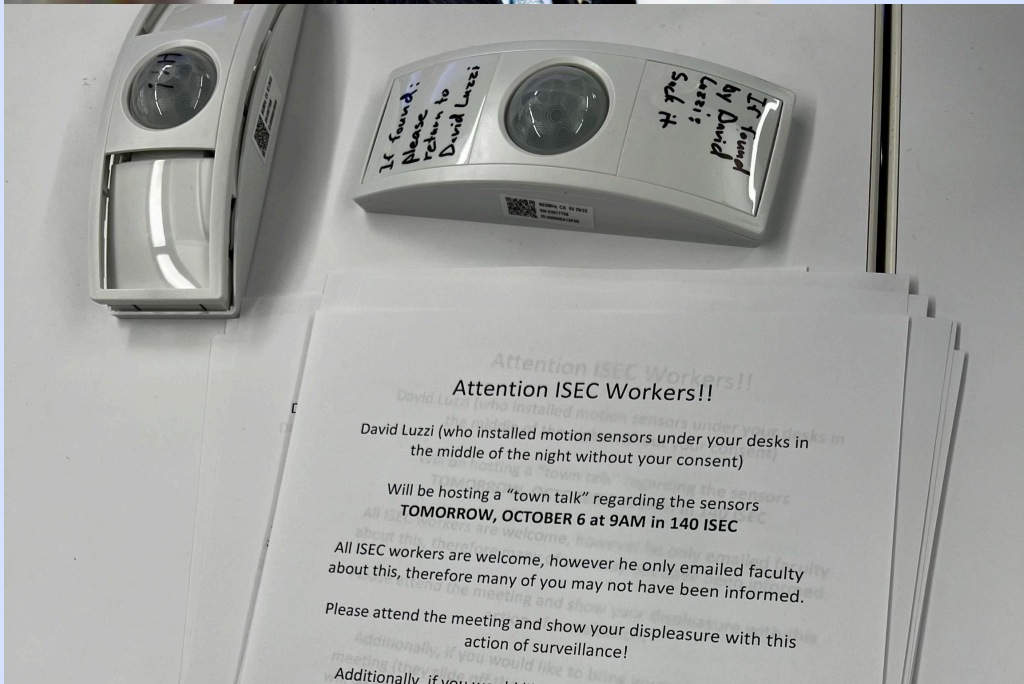
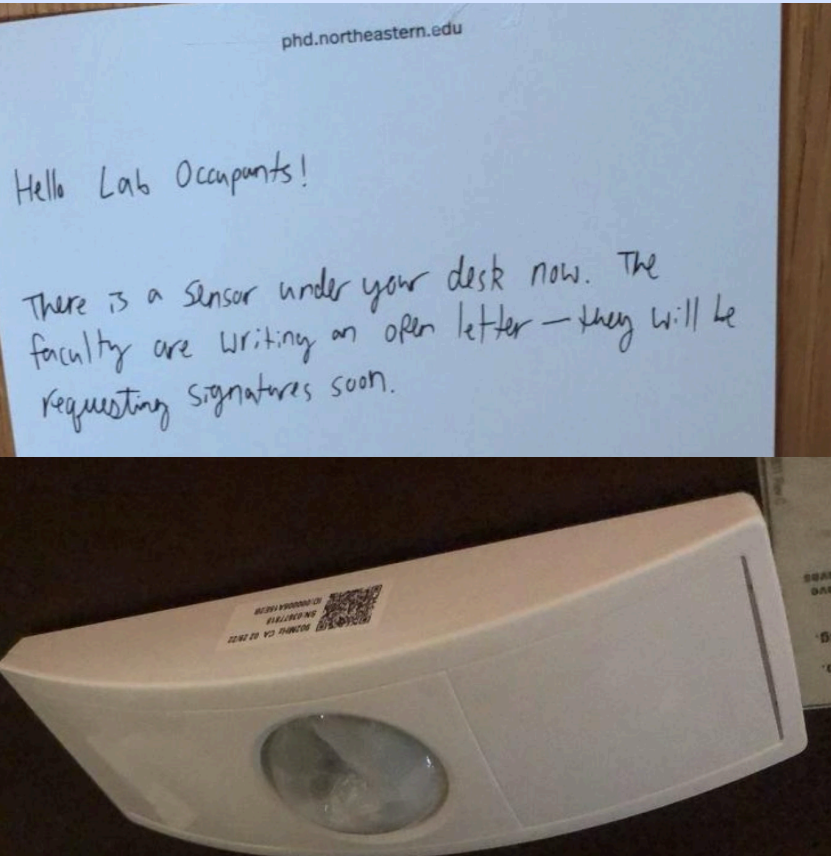


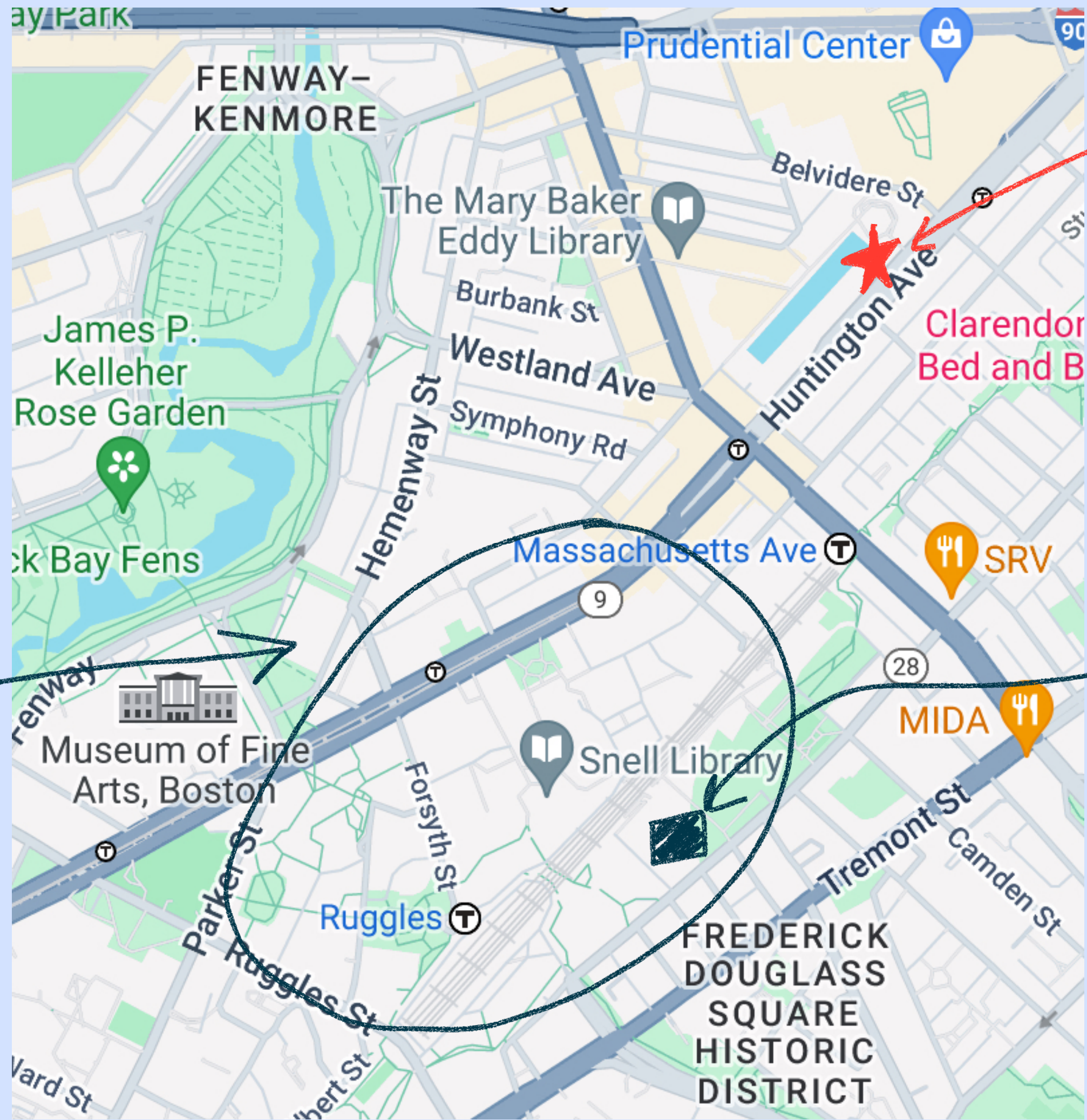
Pluralistic: 07 Oct 2022 "Don't spy on a privacy lab," and other career advice for university provosts

'NO': Grad Students Analyze, Hack, and Remove Under-Desk Surveillance Devices Designed to Track Them

Northeastern provost chose unwisely in trying to secretly surveil the work habits of grad students in a lab dedicated to digital privacy

36 1,034 1,657





Hotbed
of
Rebellion

Campus

ISEC

hmm...



spaceti Home Product Why Spaceti Resources Company Login Contact sales Get a free demo

Our Software

Our software provides an exceptional user experience and ensures a seamless workplace management for both managers and building occupants

- Workplace Experience App**
Save time searching for a workspace, meeting room or parking lot, enhance employee satisfaction, stay connected and engage with your workplace community
[Learn more →](#)
- Space Management Platform**
- Meeting Room Tablet App**
- Visitor Management App**

Location Sensor

The Location Sensor creates an indoor positioning system that can be accessed using an app installed on a personal mobile device. It can be also used to track chairs, asset tags, and personal tags.

Occupancy & People Counting

Only one sensor in the market detects and counts people sitting and standing. It is ideal for managing meeting rooms because it identifies rooms in use and monitors flexible desks by detecting unused office workstations.

Occupancy Sensor (Workspace)

The Occupancy Sensor knows whether the desk is occupied or free and reports the information to the server. It is used to track workspace vacancies, collecting anonymised data that is later analysed on the backend.

Cooperation between Spaceti and Cobblestone has led to:

Installation of 300 occupancy sensors

Periodic occupancy measurement and implementation of work shifts

Workstation Booking

The facility management team can flexibly determine how much space will be available.

Healthy Air

Improved air quality increased employee productivity and decreased complaints about the environment.

Employee Satisfaction

The Spaceti App allows employees to check the air quality levels around them and report them to FM teams.

Control System

More granular and transparent data than the current BMS systems allow for data-driven conversations with landlords.

Cobblestone



Rasmus-Juul Nytholm, Managing Director at Cobblestone

"The Spaceti solution provides much more granular and transparent data as opposed to manual counting."

L'Oréal's Workplace Transformation

L'Oréal Deutschland GmbH built a new campus in Düsseldorf and wanted to create the best workplace concept for the organisation and its employees.

[TRY IT](#)

Space Efficiency Increase of 15%



Expectations & Project Specification

- About project: 10,000m2 building with 1000 desks and 1-1 desk to employee ratio.
- Make space utilization more effective and understand which departments need more space.
- Increase employee productivity and create an activity-based workplace.
- Replace manual counting with a precise digital tool and acquire exact data.



Why Spaceti

- An occupancy analytics tool for data-driven decisions.
- Ability to immediately install 1,000 wireless occupancy sensors on 10,000 m2 with no IT support.
- Enable new workplace functions in the future.



Results & Cooperation

- 15% more space efficiency in the same amount of space.
- 20% of space in high-traffic areas, focusing on high-productivity zones to increase productivity.
- L'Oréal Deutschland and continued to expand and continue.
- 300% ROI on the investment.
- Create a better ratio between space and department.

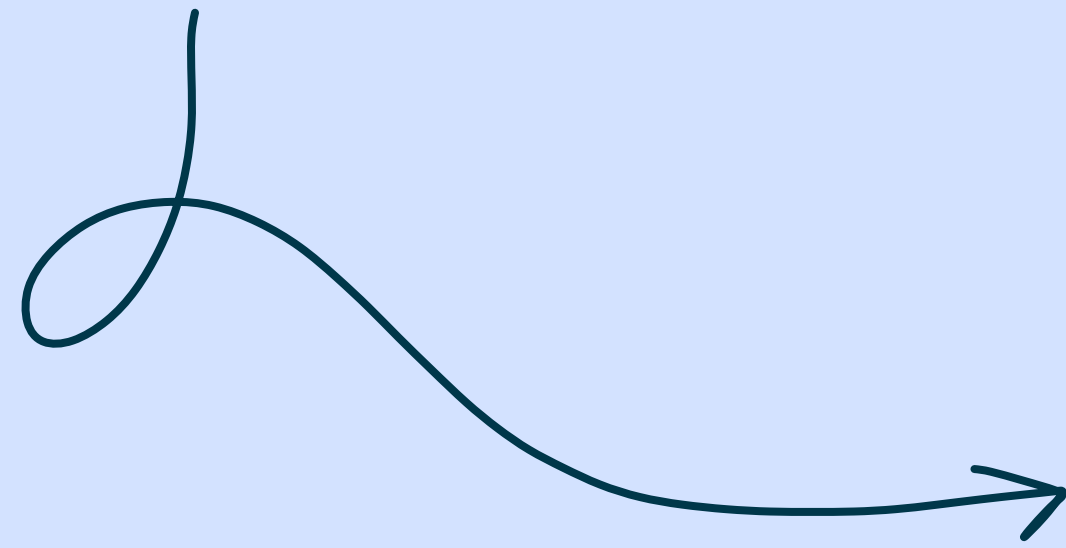




GRADUATE EMPLOYEES OF NORTHEASTERN UNIVERSITY

GENU-UAW: A UNION FOR RESEARCH AND TEACHING ASSISTANTS

Sept 2023



WE WON!

1,130-70
94% VOTING YES